

# Revision Techniques

(d) When acidified potassium permanganate is added to a solution of sodium iodide, a reaction occurs.

- (i) Write a balanced equation for the reaction by writing balanced half equations and combining them.

$\text{MnO}_4^- \rightarrow$  Something  
Something else  $\rightarrow$  Another thing  
Stuff  $\rightarrow$  other stuff

- (ii) Which species is the oxidant (oxidising agent) in this reaction?

1st one

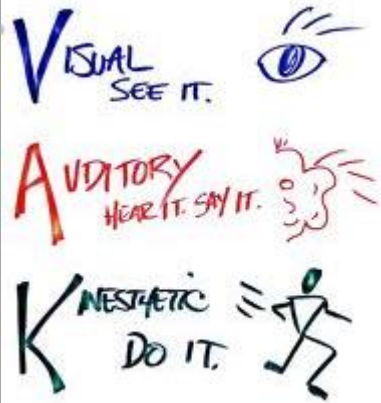


your answer guess.

\_\_\_\_\_  
\_\_\_\_\_  
\_\_\_\_\_



Didn't bother to revise ?



Aims:

## Revision Technique

To maximise your learning potential by introducing you to:

- your preferred learning style.
- a variety of different revision techniques.



# Revision Technique

Your gender influences the way you learn!

Boys will be boys.....!

Are generally good at 3D puzzles



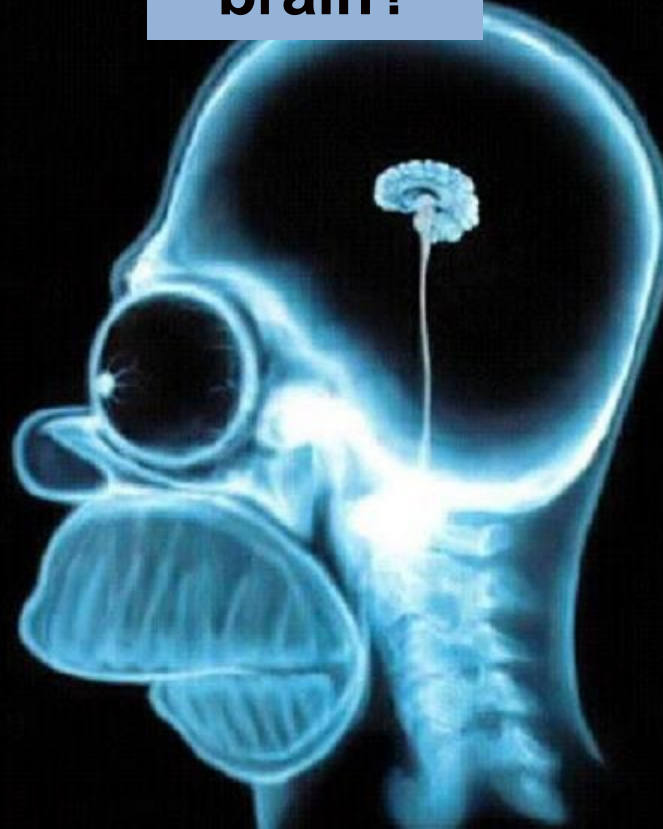
Can be greater risk takers

# Revision Technique

**Left  
brain?**

**No  
brain?**

**Right  
brain?**



**Answer these multiple choice  
questions:**

# Revision Technique – Left Brain? Right Brain?

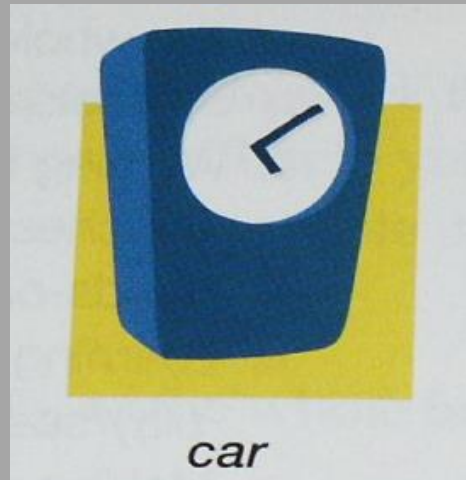
- 1) If you were doing a jigsaw puzzle would you:
  - a) Sort all the pieces into categories before you start (corners, edges, sky, etc) ?
  - b) Begin by sorting edges and corners but fit bits together as you spot them ?

# Revision Technique – Left Brain? Right Brain?

2) Which box would you more readily pair with Box 1: a or b ?



Box 1



(a)



(b)

## Revision Technique – Left Brain? Right Brain?

- 3) With a new MP3 player, mobile phone, etc would you be more likely to:
- a) Briefly examine the instruction manual and then experiment ?
  - b) Carefully read and follow the instructions ?



# Revision Technique – Left Brain? Right Brain?

4) If you were going on holiday, would you prefer to:

a) Plan what you are going to do well in advance ?

b) Book at the last minute and try and get a bargain ?





# Revision Technique – Left Brain? Right Brain?

5) Do you have hunches about the future or how things will turn out:

a) Fairly often ?

b) Hardly ever ?



# Revision Technique – Left Brain? Right Brain?

6) When you are writing an essay or a letter, do you:

- a) Regularly check your work and read what you have written ?
- b) Find checking your work a bit of a chore ?



# Revision Technique – Left Brain? Right Brain?

7) Is your work area:

- a) Organised and you can find things easily ?
- b) Untidy so you have to search to find things ?



# Revision Technique – Left Brain? Right Brain?

8) When you are given a task with a deadline, do you:

- a) Usually plan in advance and beat the deadline ?
- b) Only really get stuck in as the deadline approaches ?



# Revision Technique – Left Brain? Right Brain?

9) Which box would you more readily pair with Box 1: a or b ?



Box 1



(a)



(b)

# Revision Technique – Left Brain? Right Brain?

10) When faced with a problem, would you tend to:

- a) Get a feel for the situation and the possible solutions ?
- b) Gather and analyse the facts so that you understand the situation better ?



# Revision Technique – Left Brain? Right Brain?

11) When tackling a project are you more likely to:

- a) Make a few notes to start with ?
- b) Work on the overall structure ?





# Revision Technique – Left Brain? Right Brain?

12) Do you prefer to:

- a) Read the book then decide whether to see the film ?
- b) See the film ?

The image shows the 'Harry Potter' logo in its characteristic golden, stylized font. The letter 'P' in 'Potter' is uniquely designed to resemble a lightning bolt. The logo is set against a plain white background and is enclosed within a thin black rectangular border.

# Revision Technique – Left Brain? Right Brain?

Make a note of whether you are

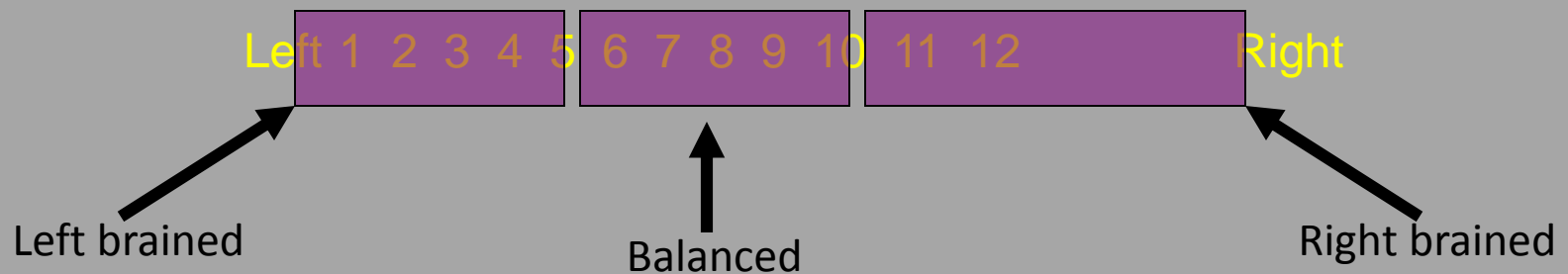
LEFT BRAINED

RIGHT BRAINED

BALANCED

(any slight preference?)

Look at your total score on this scale:

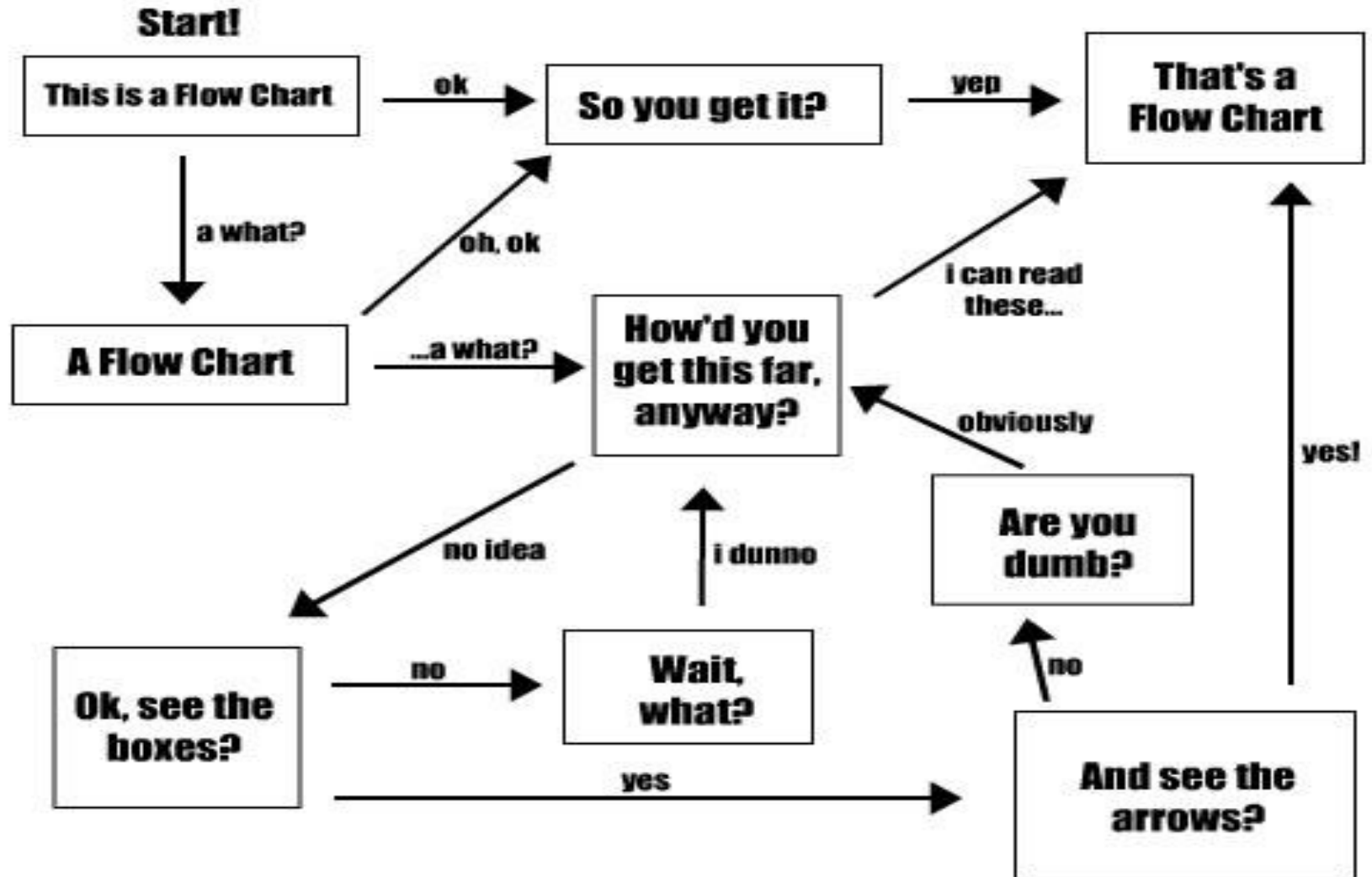




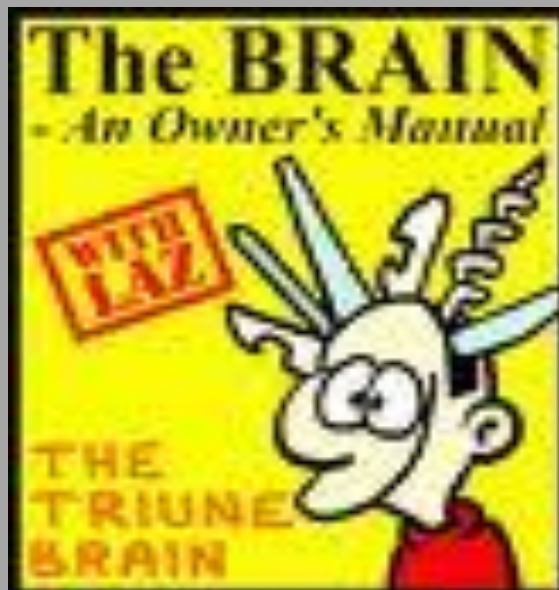


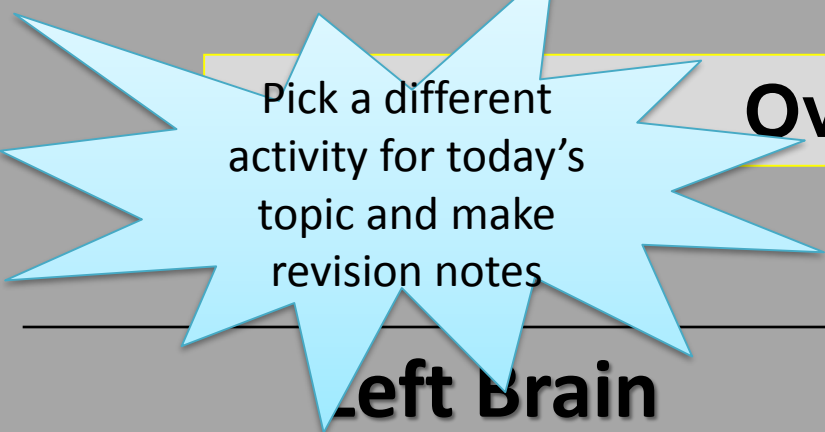
# Revision Technique – Left Brain? Right Brain?

## A Brief Lesson in Flow Charts



# Revision Technique – Left Brain? Right Brain?





Pick a different  
activity for today's  
topic and make  
revision notes

## Over to You!

### Left Brain

### Right Brain

Class notes

Mind Maps

Highlight key points

Poster Diagrams

Past papers

Flash Cards

Flow charts

Comic Strips

Follow the syllabus outline  
when studying/creating  
notes

Video  
Montage/raps/songs/poems

Bullet points/numbers/tables

Brains storms



# Link To BBC Website for Self Assessment on What type of Brain you have

- To find out what sort of learner you are try this self assessment test of 10 questions – click on link below ( it tells you if you are right/left or balanced brain).
- 
- <http://www.bbc.co.uk/keyskills/extra/module1/1.shtml>



This page was last updated in September 2004

We've left it here for reference. [More information](#)

14 May 2013

[Accessibility help](#)

[Text only](#)

[BBC Homepage](#)

[KS-Home](#)

[About](#)

[Comms](#)

[ICT](#)

[Number](#)

[Extra](#)

[Wider KS](#)

[Tutors](#)

[Video Clips](#)

[Contact Us](#)

[Like this page?](#)

[Send it to a friend!](#)

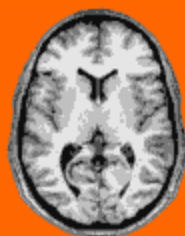
## KEY SKILLS



### LEARNING STYLES

WHAT SORT OF LEARNER ARE YOU...

[Next Screen](#)



Have you ever learned something enthusiastically, been able to tell others about it and use what you have learned immediately? Have you sometimes, however, tried to learn something, felt it was a waste of time and learned nothing?

You may have thought that it was just the subject matter that made the difference, but you might be surprised to know that it is not the entire reason! It may have been the way you happened to go about learning the new topic or the way it was taught to you.

Just as we are all very different people in the way we look, act and feel, we are also very different in the way we learn. Each of us has a learning style. If we can learn using the style we feel most comfortable with and learning can be presented to us in a style that matches our own, then we are more likely to learn well and enjoy the experience.

This questionnaire will help you to discover your preferred learning style. It will also give you some tips about how you might best use your style to study and learn more effectively.

Click 'next' to see which side of the brain you use.



[Next Screen](#)

 This page was last updated in September 2004  
We've left it here for reference. [More information](#)

- 14 May 2013  
[Accessibility help](#)  
[Text only](#)
- [BBC Homepage](#)
- [KS-Home](#)  
[About](#)  
[Comms](#)  
[ICT](#)  
[Number](#)  
[Extra](#)  
[Wider KS](#)  
[Tutors](#)  
[Video Clips](#)
- [Contact Us](#)
- Like this page?  
[Send it to a friend!](#)

# KEY SKILLS




## LEARNING STYLES

### LEFT Brain - RIGHT Brain...

[Next Screen](#) 

We all use skills and strengths associated with the two different sides of the brain, but many of us show a preference for the skills of one side over another.


**Answer yes or no to each question to see how you fit in.**

 **ACTIVITY**

Answer true or false to see whether you are a left brain or right brain dominant learner.

**Equally balanced**

Your score shows that you are using skills from both sides of the brain. This means that you can be flexible enough to use a variety of approaches to suit the task in hand. You should work effectively because you can have creative ideas and the organisational skills to put them into practice.



**TEST COMPLETE**

Click on 'more info' to learn more about the different hemispheres of the brain, or click 'next' to try another



This page was last updated in September 2004

We've left it here for reference. [More information](#)

14 May 2013

[Accessibility help](#)

[Text only](#)

[BBC Homepage](#)

[KS-Home](#)

[About](#)

[Comms](#)

[ICT](#)

[Number](#)

[Extra](#)

[Wider KS](#)

[Tutors](#)

[Video Clips](#)

[Contact Us](#)

[Like this page?](#)

[Send it to a friend!](#)

## KEY SKILLS

## EXTRA

### LEARNING STYLES

WHAT KIND OF LEARNER ARE YOU...

[Next Screen](#)



Now try this quiz. Answer the questions by clicking on the responses which suit you best.

<input type="checkbox"/>	<b>ACTIVITY</b>	Click on either A, B or C to work out what type of learner you are.
Question <b>1</b>		
What do you do when you spell a word?		
<b>A</b>	Pick up a pen and try it?	
<b>B</b>	Try to see the word in your head or try it and see if it looks right?	
<b>C</b>	Sound out the word?	

Click 'next' to find out about your **learning personality**.

[Next Screen](#)

